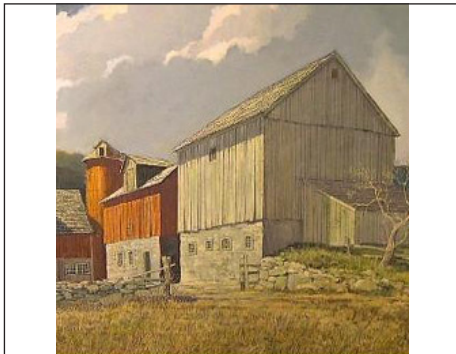


The Joyner cabin is a modern interpretation of a traditional post & beam frontier cabin. Inspired by tradition, the Joyner cabin draws inspiration from the vernacular building styles and techniques popularized throughout our pioneering past, and seeks to combine the modern amenities our clients expect with the texture and craftsmanship typically found only in older structures.



American Landscape Painting - Eric Sloane



Drawing from the emerging 'micro-house' movement, the Joyner cabin packs a lot of shelter in a very compact package, augmented by passive solar design - supporting higher energy efficiency over the life of the structure, all while reducing the impact of conventional construction methods on the surrounding environment.

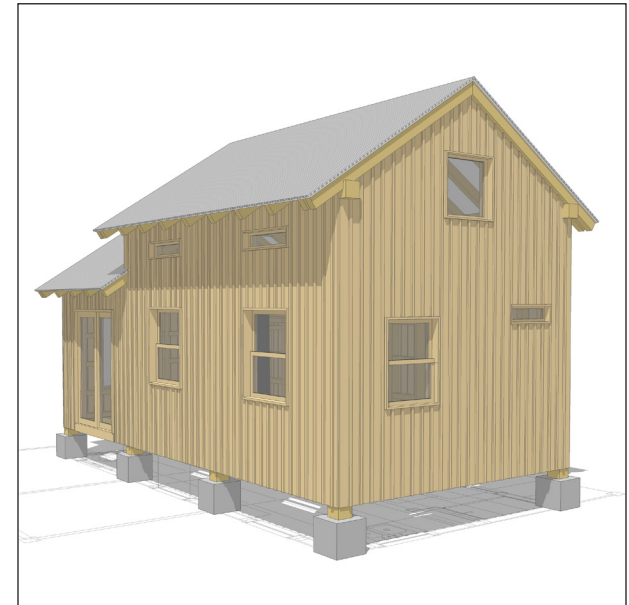
**Unlike many of our competitor's kits, Mountain Works' 'Joyner' Post & Beam kit is entirely handcrafted, and hand-cut.**

- All material is sourced locally in Western North Carolina from timber selectively harvested in a sustainable manner by trained woodsmen.
- We cut and mill the timbers ourselves, hand-cutting each joint, providing a texture that cannot be reproduced in the machine-milled log-home kits provided by many of our competitors.

**Material acquisition and preparation is a very big part of what we do at Mountain Works Sustainable Development, Inc.**

- We harvest and reclaim the bulk majority of our timber ourselves, all of the timber we harvest is done so selectively and pulled out of the forest using the power of draft animals.
- We do not employ heavy machinery at any point during our process. This helps us to greatly reduce our impact on the forest floor, air and water sources.

Ian and 'the boys' pulling a newly-cut log out of the forest



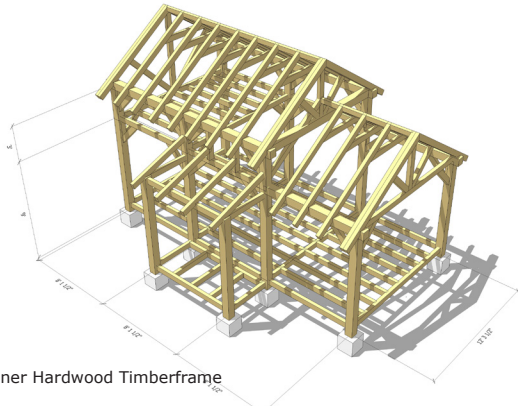
'Joyner' Cabin Southeastern Perspective

**The 'Joyner' Cabin**

- approx. 285 total s.f + loft area
- includes kitchen and full bath
- sleeping loft (above)
- flexible, open living area (doubles as second sleeping area)

The 'Full Build-Out' design incorporates the application of passive solar design principals combined with high-efficiency windows and doors, and insulation of the client's choosing. Passively heated in winter with the power of the sun and the aide of a small wood stove, and cooled in summer through the utilization of natural ventilation. (reliant upon orientation & certain site specific conditions)

The 'Frame Only' design simply removes the cabin walls, & replaces them with corner bracing for an open structure to be finished by the client or contractor later.



Joyner Hardwood Timberframe

The Joyner cabin is designed to address all modern requirements as it relates to code compliance and structural integrity, ensuring that the structure is sound, and that your purchase is a safe and reliable structure that will serve you and your family's needs for many years to come.

- The building strictly adheres to International Building Code and meets all North Carolina building code for privately-owned single-family structures.
- We do not employ heavy machinery at any point during the process. This helps us to greatly reduce our overall environmental impact.



Floor Plan

### Pricing :

Complete Structural Frame System:  
 - includes all post & beam structural members (Fully Notched/Joined & Pre-Drilled)  
 - starting at \$8,500

- Includes:
- All nominal 8x8 posts
  - All nominal 4x6 material (Beams, Joists, Rafters, Bracing)
  - All Hardwood Pegs

Pricing for the Joyner hardwood mini-timberframe kit is competitive with micro-homes of similar square footage already on the market today. However, a Mountain Works cabin kit carries the added value of the Mountain Works brand of sustainable material sourcing and fabrication. Unlike our competitors, many of which utilize highly-expensive, energy intensive milling and CNC-machined joinery processes, our kit includes all hand-cut joinery in a traditional built-form carrying considerably less embodied energy than 'conventional' construction. Our environmentally responsive designs combine with truly traditional construction technology, and sustainable material sourcing to allow us to bring you a comfortable, low-impact product unmatched in the industry today!

\* Please feel free to contact Mountain Works directly for 'Full Build-Out' pricing of this cabin kit and also for other custom design-build solutions.

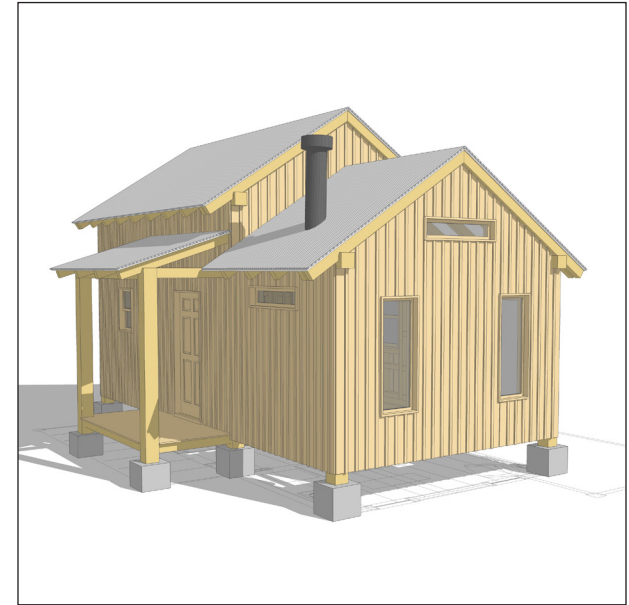
**Contact:** Ian Snider, director, co-founder

**Email:** [mtnworks@gmail.com](mailto:mtnworks@gmail.com)

**Website:** <http://www.mtnworks.org/>

## The Joyner Cabin

- another Mountain Works® Mini-Cabin



'Joyner' Cabin Northwest Perspective

Introducing a new, yet traditionally inspired, micro-house option for those seeking a 'livable' structure with a light footprint. The 'Joyner' Cabin is designed as a hand-crafted post & beam cabin kit YOU can assemble yourself with simple tools and a few extra hands.

